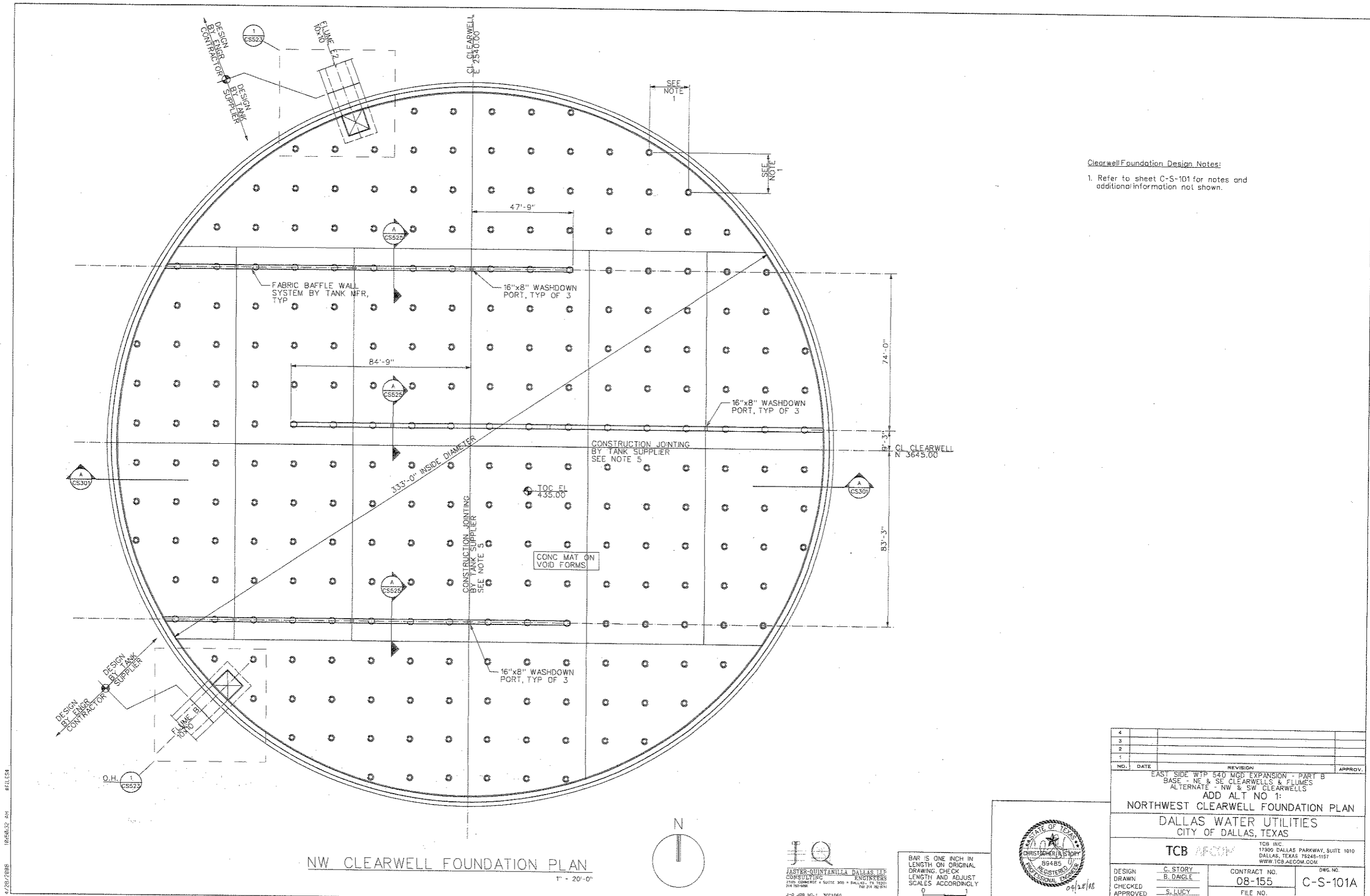
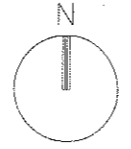


4/28/2008 10:50:32 AM 150ALES



Clearwell Foundation Design Notes:
 1. Refer to sheet C-S-101 for notes and additional information not shown.

NW CLEARWELL FOUNDATION PLAN
 1" = 20'-0"



JQ
 JASTER-QUINTANILLA DALLAS, LLP
 CONSULTING ENGINEERS
 2100 COMMERCE • SUITE 300 • DALLAS, TX 75201
 214.752-6888
 J-Q JOB NO.: 3021060

BAR IS ONE INCH IN LENGTH ON ORIGINAL DRAWING. CHECK LENGTH AND ADJUST SCALES ACCORDINGLY

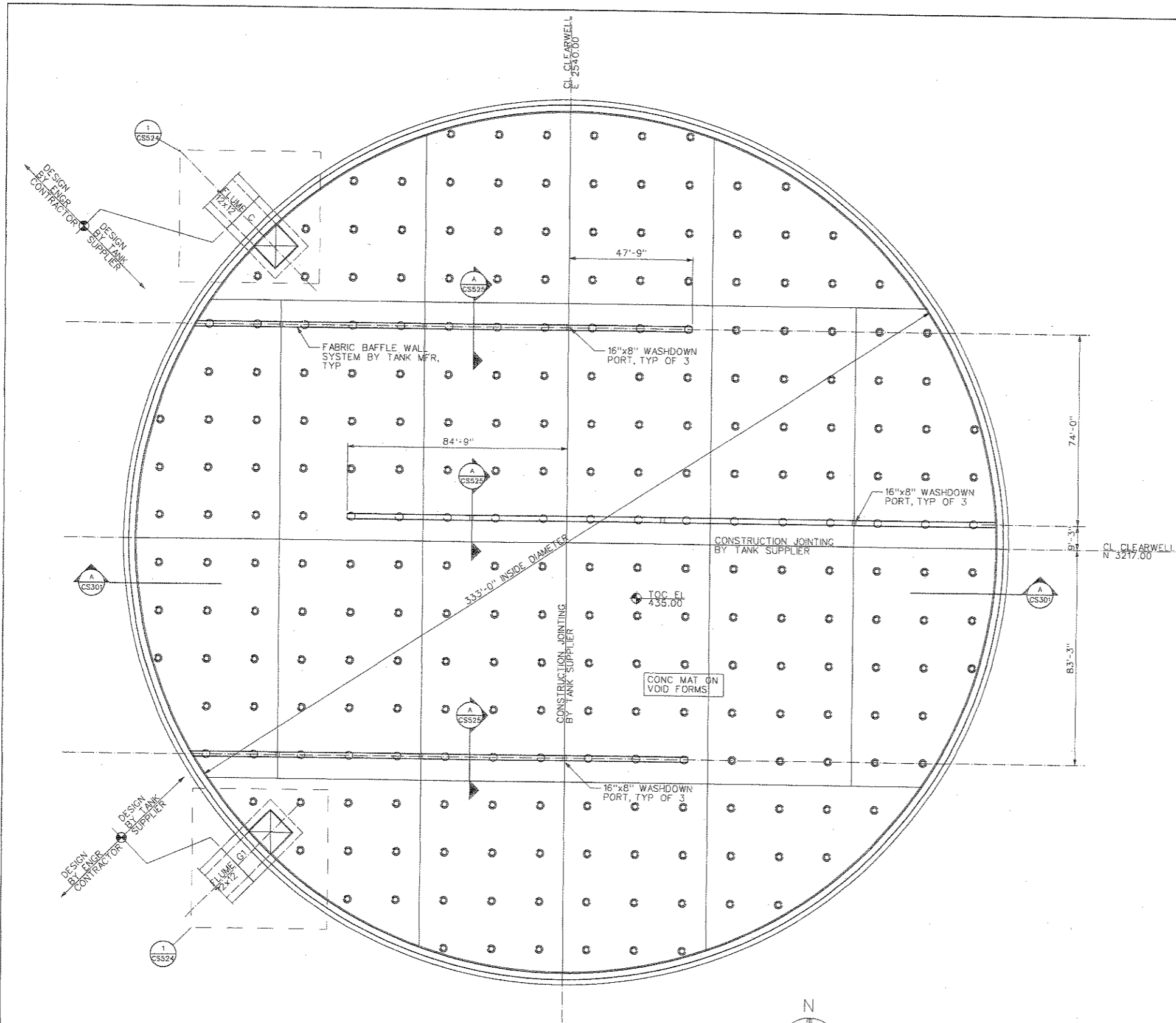


NO.	DATE	REVISION	APPROV.
4			
3			
2			
1			

EAST SIDE WTP 540 MGD EXPANSION - PART B
 BASE - NE & SE CLEARWELLS & FLUMES
 ALTERNATE - NW & SW CLEARWELLS
 ADD ALT NO 1:
 NORTHWEST CLEARWELL FOUNDATION PLAN
 DALLAS WATER UTILITIES
 CITY OF DALLAS, TEXAS

TCB AECOM
 TCB INC.
 17300 DALLAS PARKWAY, SUITE 1010
 DALLAS, TEXAS 75245-1157
 WWW.TCB.AECOM.COM

DESIGN DRAWN CHECKED APPROVED DATE	C. STORY B. DAIGLE S. LUCY APRIL 2008	CONTRACT NO. 08-155	DWG. NO. C-S-101A
		FILE NO. 620Q-400R.3	2.04 of 2.10

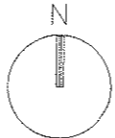


Clearwell Foundation Design Notes:

1. Refer to sheet C-S-101 for notes and additional information not shown.

SW CLEARWELL FOUNDATION PLAN

1" = 20'-0"



JASTER-QUINTANILLA DALLAS LLP
CONSULTING ENGINEERS
2100 COMMERCE • SUITE 200 • DALLAS, TX 75201
214-761-1888

BAR IS ONE INCH IN LENGTH ON ORIGINAL DRAWING. CHECK LENGTH AND ADJUST SCALES ACCORDINGLY.



NO.	DATE	REVISION	APPROV.
4			
3			
2			
1			

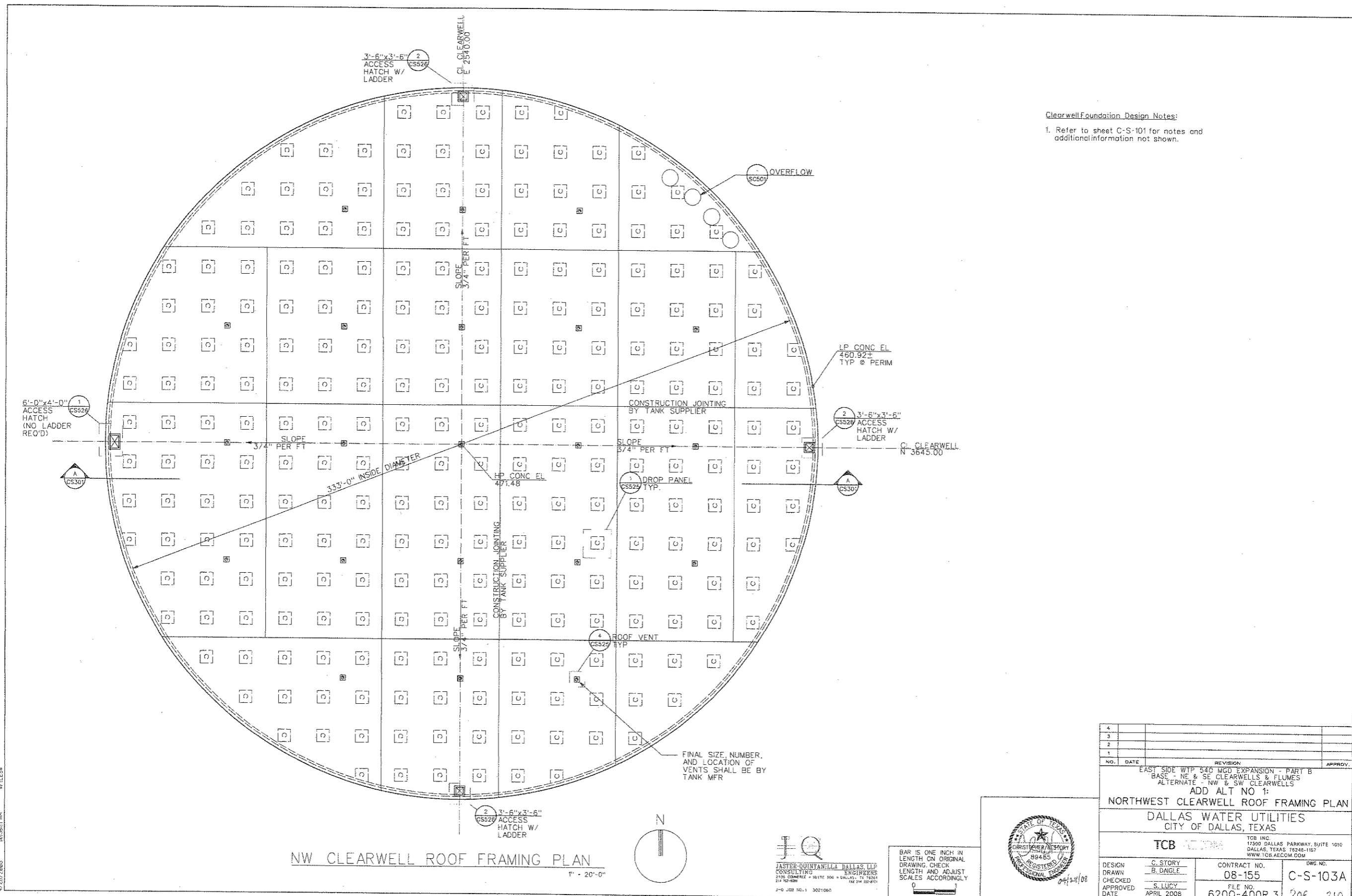
EAST SIDE WTP 540 MGD EXPANSION - PART B
BASE - NE & SE CLEARWELLS & FLUMES
ALTERNATE - NW & SW CLEARWELLS
ADD ALT NO 1:
SOUTHWEST CLEARWELL FOUNDATION PLAN
DALLAS WATER UTILITIES
CITY OF DALLAS, TEXAS

TCB AECOM
TCB INC.
17200 DALLAS PARKWAY, SUITE 1010
DALLAS, TEXAS 75248-1157
WWW.TCB.AECOM.COM

DESIGN	C. STORY	CONTRACT NO.	DWG. NO.
DRAWN	B. DAGLE	08-155	C-S-102A
CHECKED	S. LUCY	FILE NO.	
APPROVED		620Q-400R.3	205 of 210
DATE	APRIL 2008		

4/28/2008 10:51:01 AM SCALES

4/28/2008 10:51:01 AM RELEASE



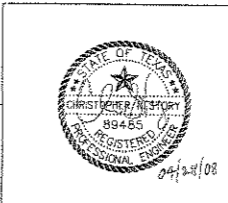
Clearwell Foundation Design Notes:
 1. Refer to sheet C-S-101 for notes and additional information not shown.

NO.	DATE	REVISION	APPROV.
4			
3			
2			
1			

EAST SIDE WTP 540 MGD EXPANSION - PART B
 BASE - NE & SE CLEARWELLS & FLUMES
 ALTERNATE - NW & SW CLEARWELLS
 ADD ALT NO 1:
NORTHWEST CLEARWELL ROOF FRAMING PLAN
 DALLAS WATER UTILITIES
 CITY OF DALLAS, TEXAS

TCB CONSULTANTS
 TCB INC.
 17590 DALLAS PARKWAY SUITE 1010
 DALLAS, TEXAS 75248-1157
 WWW.TCB.AECOM.COM

DESIGN	C. STORY	CONTRACT NO.	08-155	DWG. NO.	C-S-103A
DRAWN	B. DAIGLE	FILE NO.	620Q-400R.3	206 of 210	
CHECKED	S. LUCY	DATE	APRIL 2008		



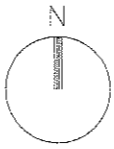
JQ
 JASTER-QUINTANILLA DALLAS LLP
 CONSULTING ENGINEERS
 2100 GIMMEREY • SUITE 500 • DALLAS, TX 75201
 214-762-9291 FAX 214-762-9211
 J-Q JOB NO. 1 3021080

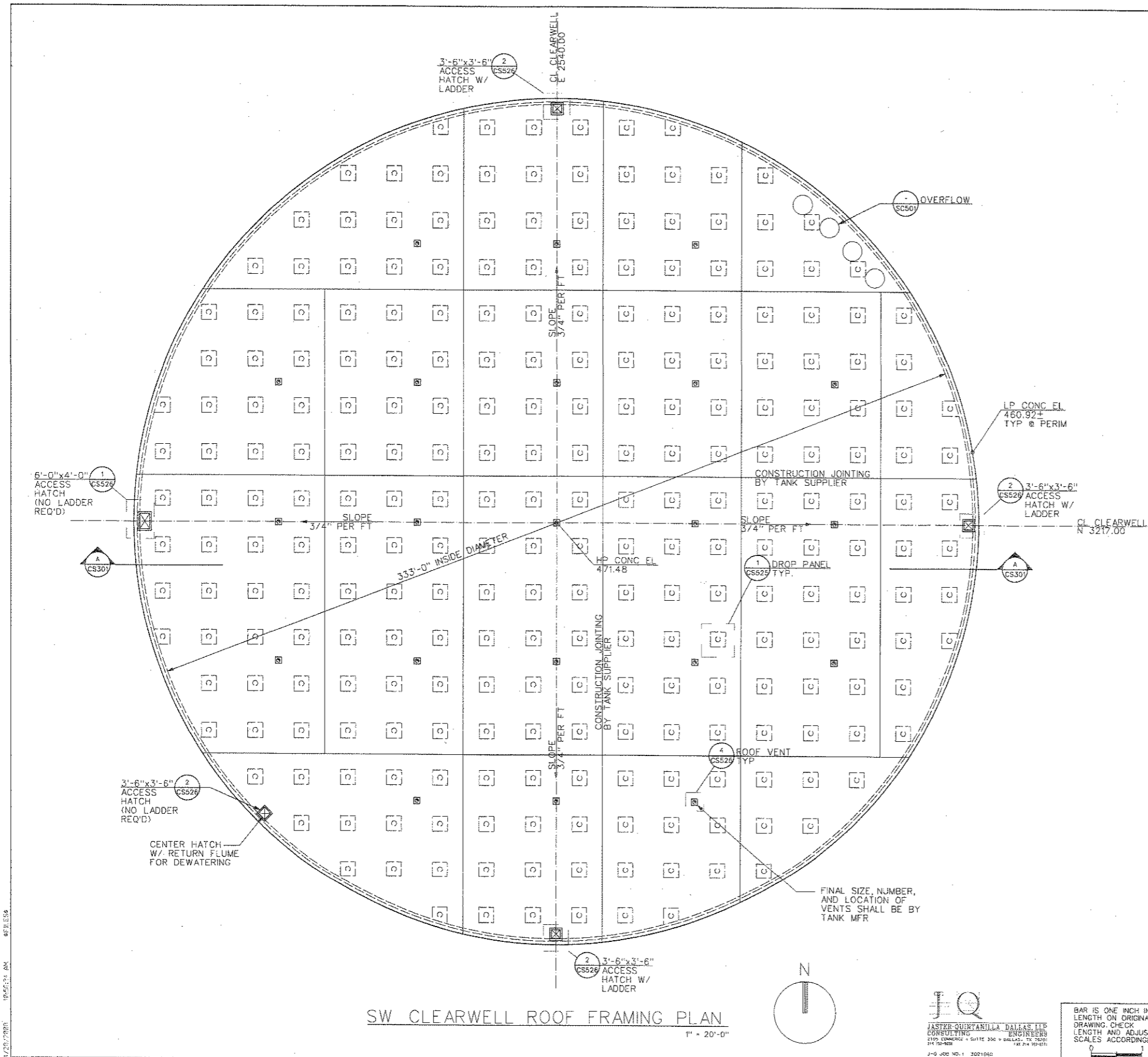
BAR IS ONE RICH IN LENGTH ON ORIGINAL DRAWING. CHECK LENGTH AND ADJUST SCALES ACCORDINGLY.

87LES5 4/20/2008 10:56:11 AM 850ALES

87LES5 4/20/2008 10:56:11 AM 850ALES

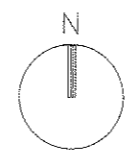
NW CLEARWELL ROOF FRAMING PLAN
 1" = 20'-0"





Clearwell Foundation Design Notes:
 1. Refer to sheet C-S-101 for notes and additional information not shown.

SW CLEARWELL ROOF FRAMING PLAN
 1" = 20'-0"



JQ
 JUSTIN QUINN & ASSOCIATES, DALLAS, TEXAS
 CONSULTING ENGINEERS
 2109 LUMBERCREEK SUITE 300 • DALLAS, TX 75201
 972.342.7800 FAX 972.342.7801

BAR IS ONE INCH IN LENGTH ON ORIGINAL DRAWING. CHECK LENGTH AND ADJUST SCALES ACCORDINGLY.



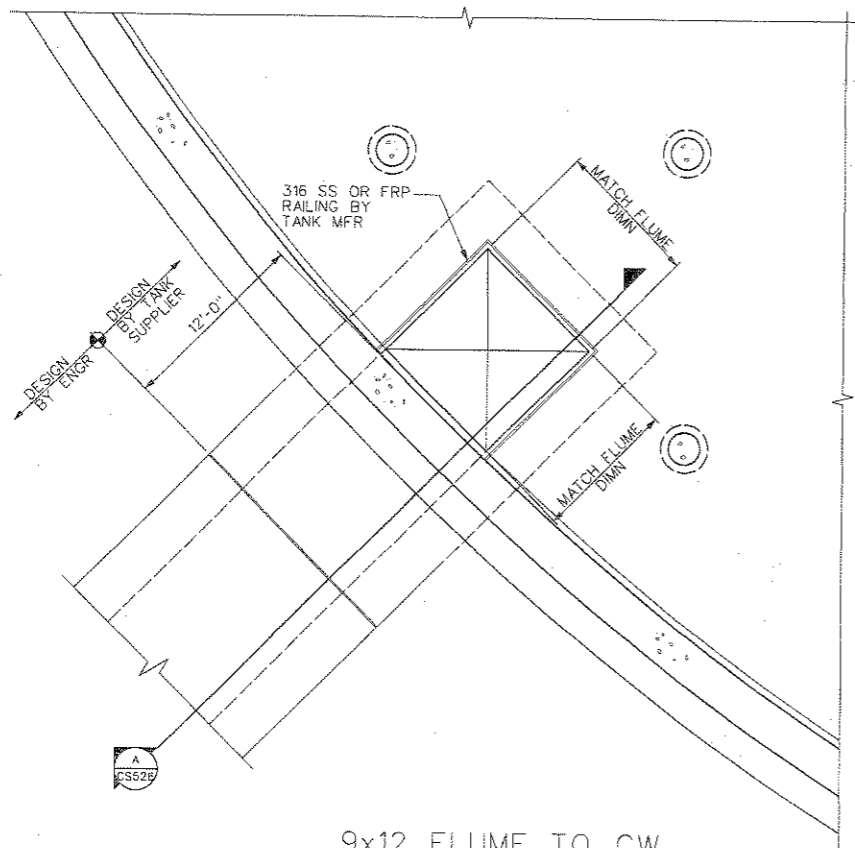
NO.	DATE	REVISION	APPROV.
4			
3			
2			
1			

EAST SIDE WYP 540 MGD EXPANSION - PART B
 BASE - NE & SE CLEARWELLS & FLUMES
 ALTERNATE - NW & SW CLEARWELLS
 ADD ALT NO 1:
SOUTHWEST CLEARWELL ROOF FRAMING PLAN
 DALLAS WATER UTILITIES
 CITY OF DALLAS, TEXAS

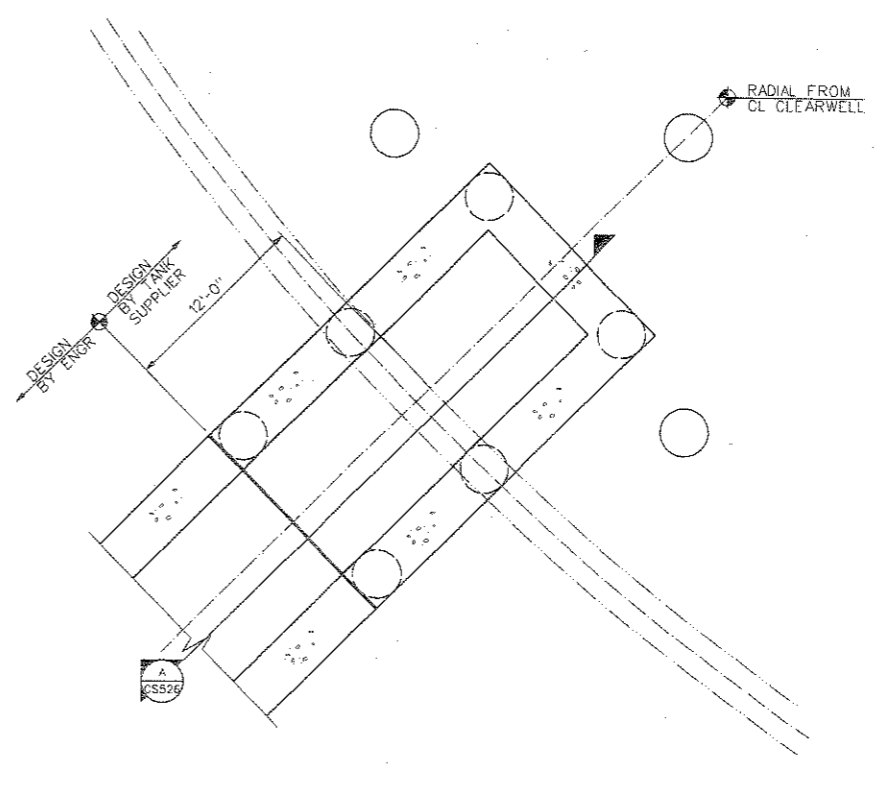
TCB AECOM
 TCB INC.
 17200 DALLAS PARKWAY, SUITE 1010
 DALLAS, TEXAS 75248-1127
 WWW.TCB.AECOM.COM

DESIGN	C. STORY	CONTRACT NO.	DWG. NO.
DRAWN	B. DAIGLE	08-155	C-S-104A
CHECKED	S. LUCY	FILE NO.	
APPROVED	APRIL 2008	620Q-400R.3	207 OF 210
DATE			

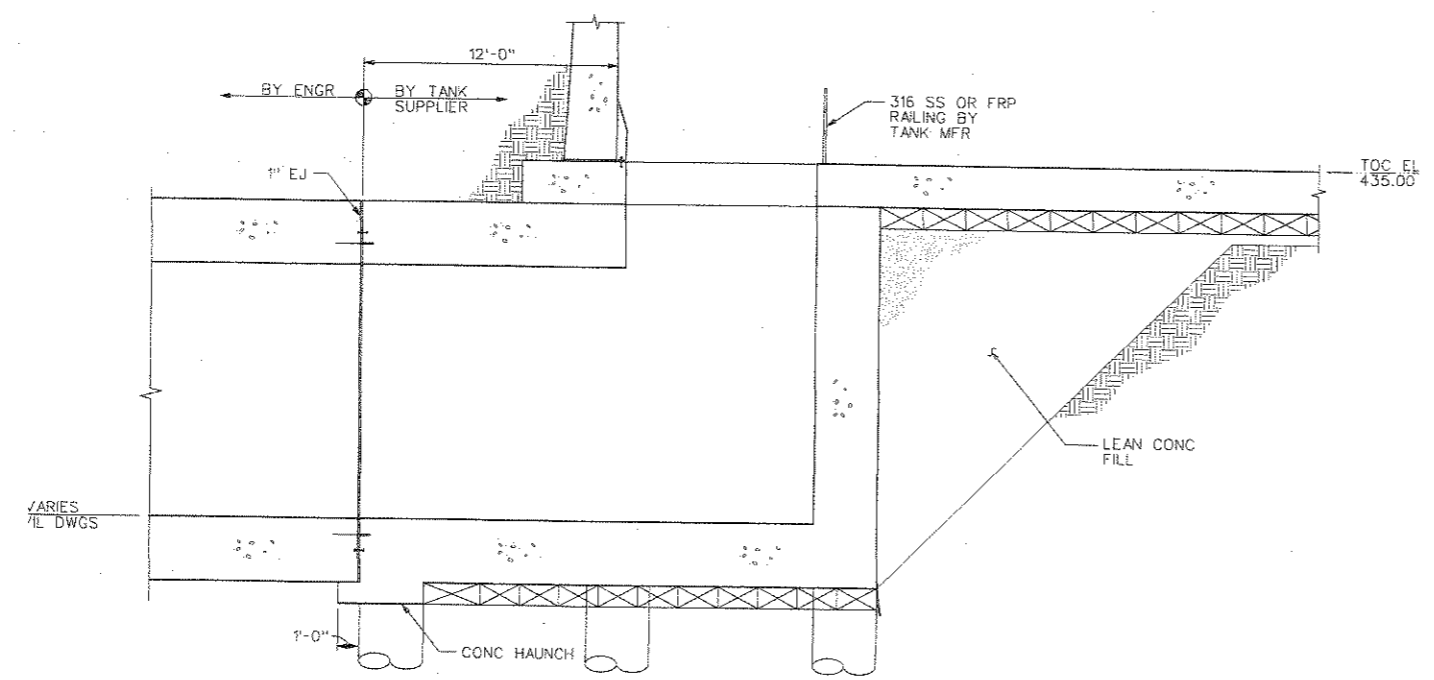
4/28/2008 10:56:34 AM \$5ALES
 4/28/2008 10:56:34 AM \$FILE\$9
 4/28/2008 10:56:34 AM \$FILE\$9



1 9x12 FLUME TO CW CONNECTION UPPER PLAN
3/16" = 1'-0"



2 9x12 FLUME TO CW CONNECTION LOWER PLAN
3/16" = 1'-0"



3 9x12 FLUME TO CW CONNECTION SECTION
1/4" = 1'-0"

NO.	DATE	REVISION	APPROV.
4			
3			
2			
1			

EAST SIDE WTP 540 MGD EXPANSION - PART B
BASE - NE & SE CLEARWELLS & FLUMES
ALTERNATE - NW & SW CLEARWELLS
ADD ALT NO 1:
CONCRETE SECTIONS AND DETAILS I
DALLAS WATER UTILITIES
CITY OF DALLAS, TEXAS

TCB INC.
17300 DALLAS PARKWAY, SUITE 1070
DALLAS, TEXAS 75248-1157
WWW.TCB.AECOM.COM

DESIGN	C. STORY	CONTRACT NO.	DWG. NO.
DRAWN	B. DAIGLE	08-155	C-S-523A
CHECKED		FILE NO.	
APPROVED	S. LUCY	620Q-400R.3	208 of 210
DATE	APRIL 2008		

JQ
JASTER-QUINTANILLA DALLAS LLP
CONSULTING ENGINEERS
2100 COMMERCE • 3017E 303 • DALLAS, TX 75201
214 352-4528
FIDELITY+DIVERSITY
AECOM

BAR IS ONE INCH IN LENGTH ON ORIGINAL DRAWING. CHECK LENGTH AND ADJUST SCALES ACCORDINGLY.



4/25/2008 11:09:41 AM REFILES
4/25/2008 10:05:45 AM ESCALES