

KEY

AREA 1 D-C-111	*
AREA 2 D-C-112	*
AREA 3 D-C-113	*
AREA 5 D-C-115	*

* NOT USED FOR THIS CONTRACT



- PHASE A - EXISTING STRUCTURES TO BE DEMOLISHED**
- ① 8" X 8" FILTERED WATER CONDUIT
- PHASE B - EXISTING STRUCTURES TO BE DEMOLISHED**
- ② WEST PORTION OF STAGE II FILTER EFFLUENT (90-FW-PCCE)
 - ③ STAGE II CLEARWELL
 - ④ STAGE II PIPING (78-TW-PCCE)
 - ⑤ STORM SEWER (36-ST)
 - ⑥ SUMP DISCHARGE PIPING (3-SD, 4-SD)
 - ⑦ 72" BYPASS PIPING FROM JIM MILLER HEADER EAST (72-TW-PCCE). EXTENT OF 72" BYPASS DEMOLITION IN THIS PHASE TO BE ONLY AS NECESSARY TO INSTALL NEW JIM MILLER (NORTH) BYPASS CONNECTION.
- PHASE C - EXISTING STRUCTURES TO BE DEMOLISHED**
- ⑧ WEST PORTION OF STAGE I FILTER EFFLUENT (78-FW-PCCE)
- PHASE D - EXISTING STRUCTURES TO BE DEMOLISHED**
- ⑨ REMAINDER OF STAGE I FILTER EFFLUENT (78-FW-PCCE)
 - ⑩ REMAINDER OF STAGE II FILTER EFFLUENT (90-FW-PCCE)
- PHASE E - EXISTING STRUCTURES TO BE DEMOLISHED**
- ⑪ STAGE II FILTER EFFLUENT PIPING (78-FW-PCCE)
 - ⑫ STAGE I CLEARWELL
 - ⑬ STAGE I PIPING (78-TW-PCCE)
 - ⑭ JUNCTION BOX 1
 - ⑮ GATE CONTROL STRUCTURE
 - ⑯ CLEARWELL DRAIN (6-D)
 - ⑰ STAGE III CLEARWELL
 - ⑱ STAGE III PIPING (96-TW-PCCE, 96-TW-PCCE)
 - ⑲ JUNCTION BOX 2
 - ⑳ STAGE III PIPING EAST OF JUNCTION BOX 1 (114-TW-PCCE, 78-TW-PCCE)
 - ㉑ REMAINDER OF 72" BYPASS PIPING (72-TW-PCCE)

GENERAL DEMOLITION NOTES FOR SHEETS D-C-110 THROUGH D-C-115

1. REFER TO SHEETS C-G-111 THROUGH C-G-118 AND SPEC 01310 FOR SCHEDULED TIMES OF DEMOLITION.
2. CONTRACTOR TO SUBMIT CONSTRUCTION SEQUENCING PLAN INSURING THAT EACH FILTER EFFLUENT PIPE SHALL BE REPLACED IMMEDIATELY FOLLOWING DEMOLITION, OR AS SEQUENCED ON SHEETS C-G-113 THROUGH C-G-117, AT LEAST ONE FILTER EFFLUENT LINE MUST BE IN SERVICE AT ALL TIMES.
3. ALL EXISTING CLEARWELLS HAVE PIERS AND COLUMNS TO BE REMOVED. CONTRACTOR TO VERIFY THE ACTUAL LOCATION OF ALL PIERS AND COLUMNS.
4. ALL THRUST BLOCKS MUST BE REMOVED WITH PIPE DEMOLITION.
5. CONTRACTOR TO PROTECT TPS-3 EXCAVATION AND SHORING DURING DEMOLITION.
6. EXISTING FACILITIES TO REMAIN OPERATIONAL AS PER CONSTRUCTION SEQUENCING REQUIREMENTS. CONTRACTOR TO MAINTAIN DRAINAGE FROM FACILITIES AND SITE DURING CONSTRUCTION, 24 HOURS PER DAY, 7 DAYS PER WEEK. CONTRACTOR TO PROVIDE TEMPORARY DRAINAGE ROUTING AND/OR PUMPING AS NEEDED TO MAINTAIN DRAINAGE FROM FACILITIES AND SITE.

NO.	DATE	REVISION	APPROV.
4			
3			
2			
1			

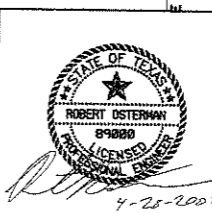
EAST SIDE WTP 540 MGD EXPANSION - PART B
 BASE - NE & SE CLEARWELLS & FLUMES
 ALTERNATE - NW & SW CLEARWELLS
DEMOLITION PLAN
GENERAL LAYOUT
DALLAS WATER UTILITIES
 CITY OF DALLAS, TEXAS

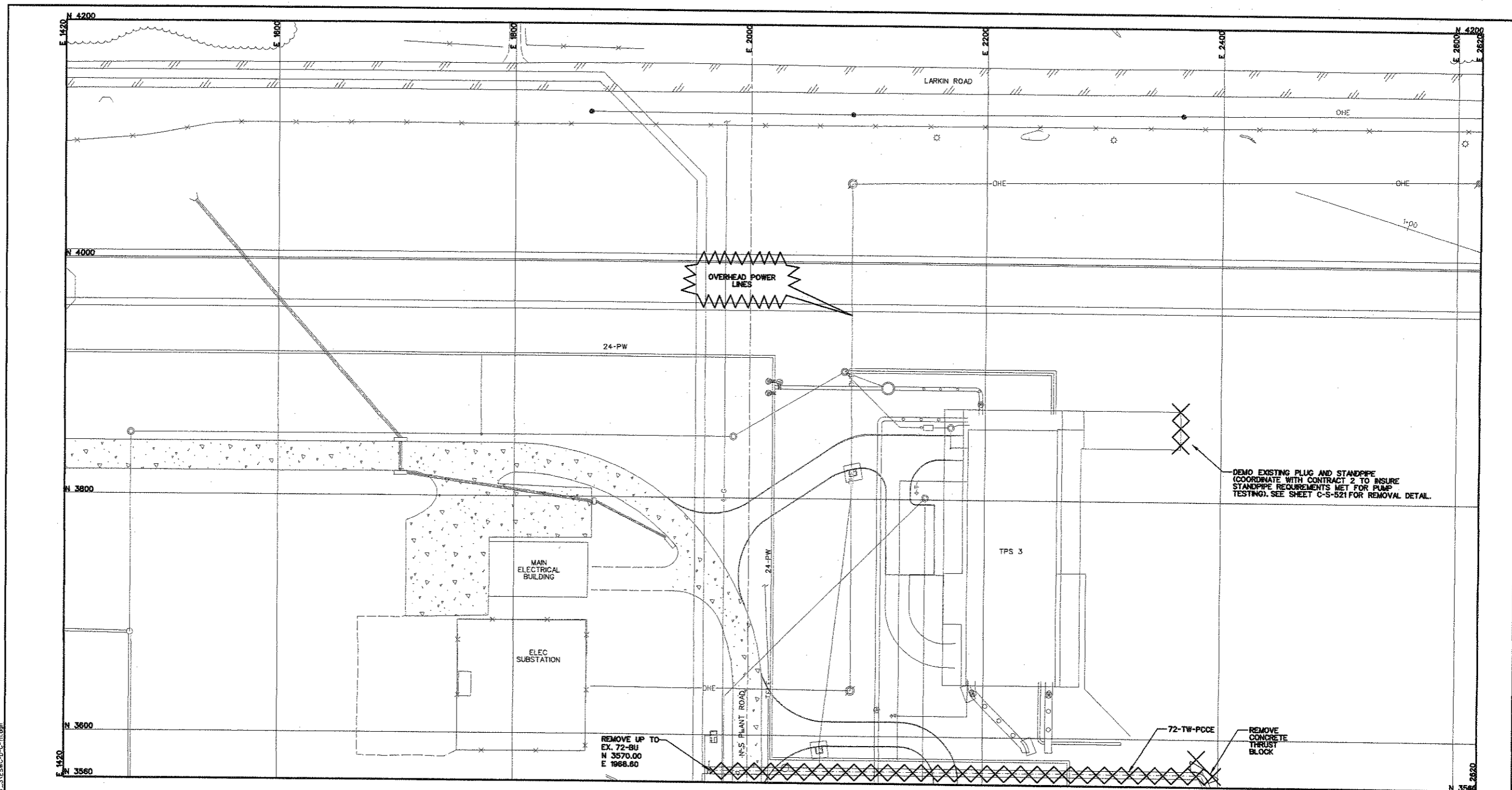
TCB AECOM

TCB INC.
 17300 DALLAS PARKWAY, SUITE 1010
 DALLAS, TEXAS 75248-1157
 WWW.TCB.AECOM.COM

DESIGN	RO	CONTRACT NO.	DWG. NO.
DRAWN	RE/TAS	08-155	D-C-110
CHECKED	US	FILE NO.	
APPROVED	RO	620Q-400R.3	24 of 210
DATE	APR. 2008		

BAR IS ONE INCH IN LENGTH ON ORIGINAL DRAWING. CHECK LENGTH AND ADJUST SCALES ACCORDINGLY.





KEY

AREA 1 D-C-111	*
AREA 2 D-C-112	
AREA 3 D-C-113	*
AREA 4 D-C-114	
AREA 5 D-C-115	

* NOT USED FOR THIS CONTRACT

LEGEND

	EXISTING
	PROPOSED
	FUTURE

NOTE:
1. REFER TO SHEET D-C-110 FOR GENERAL DEMOLITION NOTES.

N

0 40 80

BAR IS ONE INCH IN LENGTH ON ORIGINAL DRAWING. CHECK LENGTH AND ADJUST SCALES ACCORDINGLY.

NO.	DATE	REVISION	APPROV.
4			
3			
2			
1			

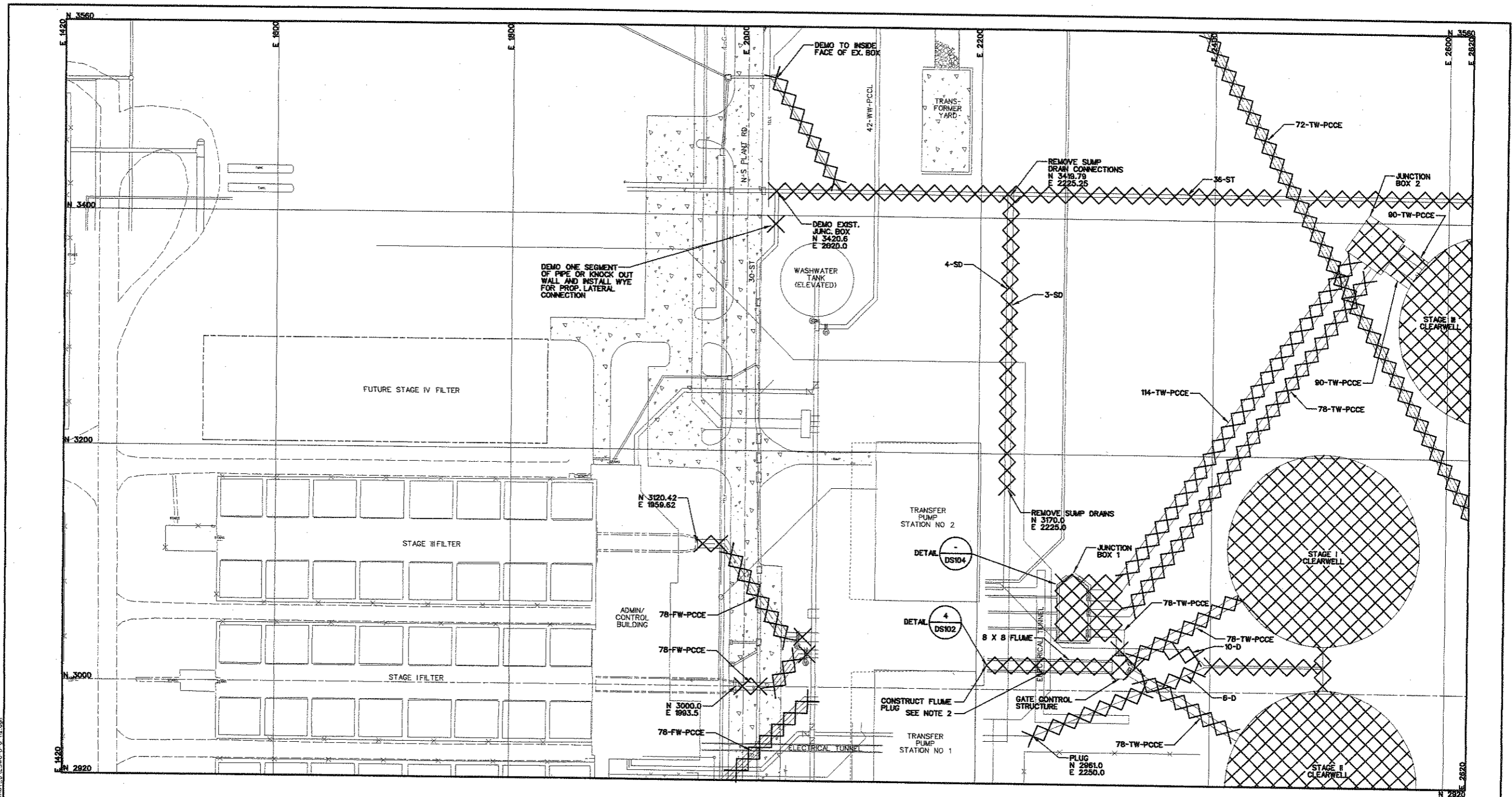
EAST SIDE WTP 540 MGD EXPANSION - PART B
BASE - NE & SE CLEARWELLS & FLUMES
ALTERNATE - NW & SW CLEARWELLS
DEMOLITION PLAN - AREA 1

DALLAS WATER UTILITIES
CITY OF DALLAS, TEXAS

TCB | AECOM

TCB INC.
17800 DALLAS PARKWAY, SUITE 1010
DALLAS, TEXAS 75248-1167
WWW.TCB.AECOM.COM

DESIGN	RO	CONTRACT NO.	DWG. NO.
DRAWN	RE/TAS	08-155	D-C-111
CHECKED	US	FILE NO.	25 of 210
APPROVED	RO	620Q-400R.3	
DATE	APR 2008		



KEY

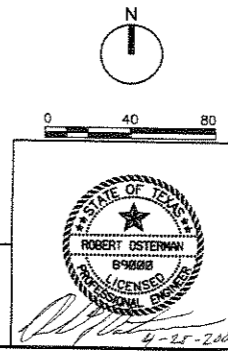
AREA 1 D-C-111	*
AREA 2 D-C-112	*
AREA 3 D-C-113	*
AREA 4 D-C-114	*
AREA 5 D-C-115	*

* NOT USED FOR THIS CONTRACT

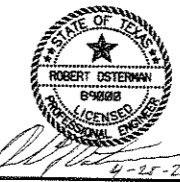
LEGEND

	EXISTING
	PROPOSED
	FUTURE

NOTE:
 1. REFER TO SHEET D-C-110 FOR GENERAL DEMOLITION NOTES.
 2. CONTRACTOR TO PROTECT ELECTRICAL TUNNELS AND ELECTRICAL SUBSTATION DURING DEMOLITION.



BAR IS ONE INCH IN LENGTH ON ORIGINAL DRAWING. CHECK LENGTH AND ADJUST SCALES ACCORDINGLY.



NO.	DATE	REVISION	APPROV.
1			
2			
3			
4			

EAST SIDE WTP 540 MGD EXPANSION - PART B
 BASE - NE & SE CLEARWELLS & FLUMES
 ALTERNATE - NW & SW CLEARWELLS
DEMOLITION PLAN - AREA 2

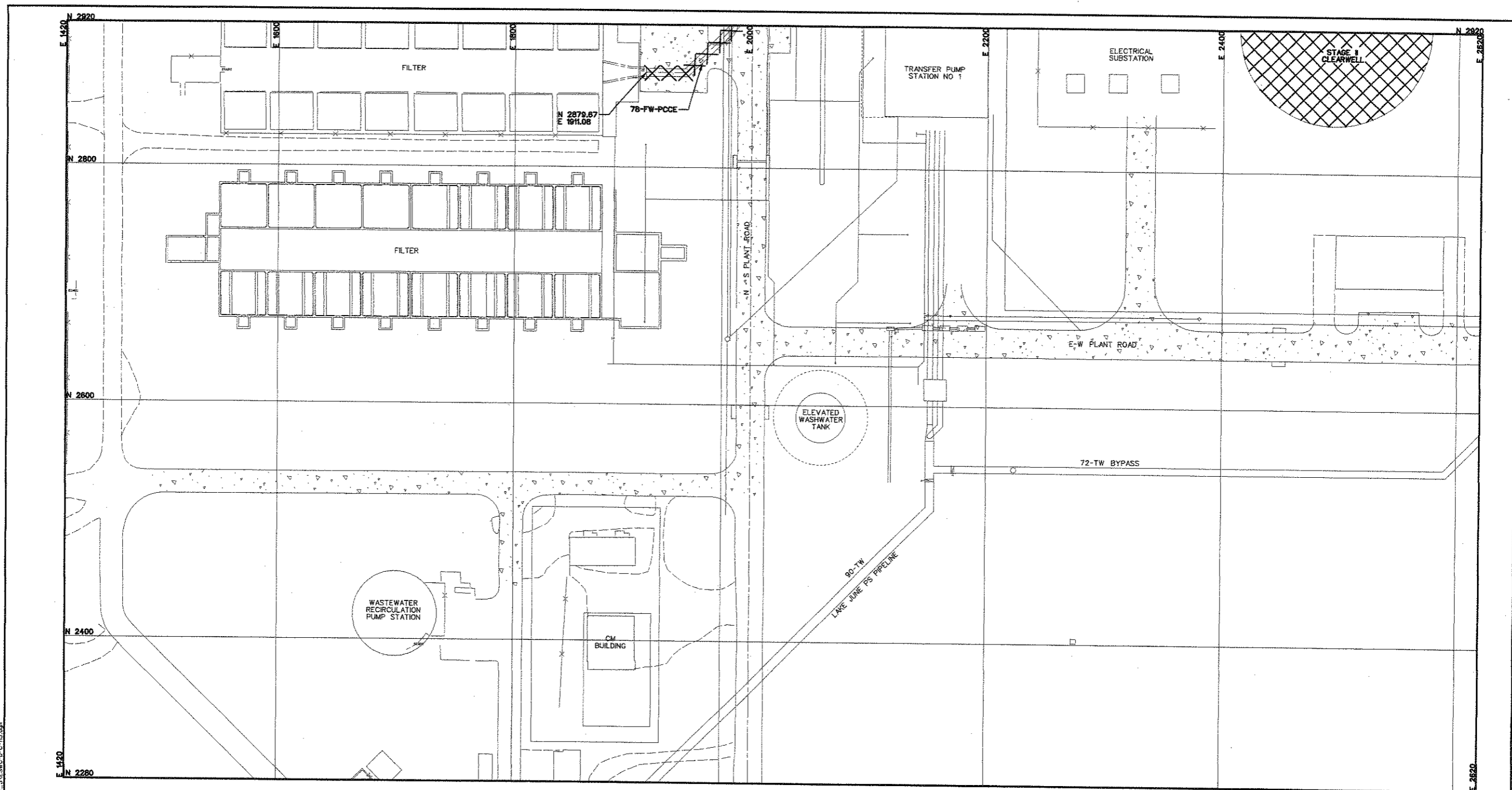
DALLAS WATER UTILITIES
 CITY OF DALLAS, TEXAS

TCB | AECOM

TCB INC.
 17900 DALLAS PARKWAY, SUITE 1010
 DALLAS, TEXAS 75248-1167
 WWW.TCB.AECOM.COM

DESIGN	RD	CONTRACT NO.	08-155	DWG. NO.	D-C-112
DRAWN	REJTAS	FILE NO.	620Q-400R.3	DATE	26 of 210
CHECKED	US				
APPROVED	RD				
DATE	APR. 2008				

J:\2008\0815\0815\0815.dwg Sheet 1 CONTRACT 3 YESVC D-C-113 2/08



KEY

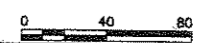
AREA 1 D-C-111	*
AREA 2 D-C-112	*
AREA 5 D-C-115	*

* NOT USED FOR THIS CONTRACT

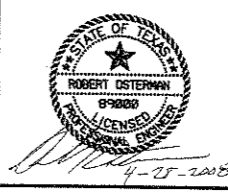
LEGEND

	EXISTING
	PROPOSED
	FUTURE

NOTE:
1. REFER TO SHEET D-C-110 FOR GENERAL DEMOLITION NOTES.



BAR IS ONE INCH IN LENGTH ON ORIGINAL DRAWING. CHECK LENGTH AND ADJUST SCALES ACCORDINGLY.



NO.	DATE	REVISION	APPROV.

EAST SIDE WTP 540 MGD EXPANSION - PART B
 BASE - NE & SE CLEARWELLS & FLUMES
 ALTERNATE - NW & SW CLEARWELLS
 DEMOLITION PLAN - AREA 3

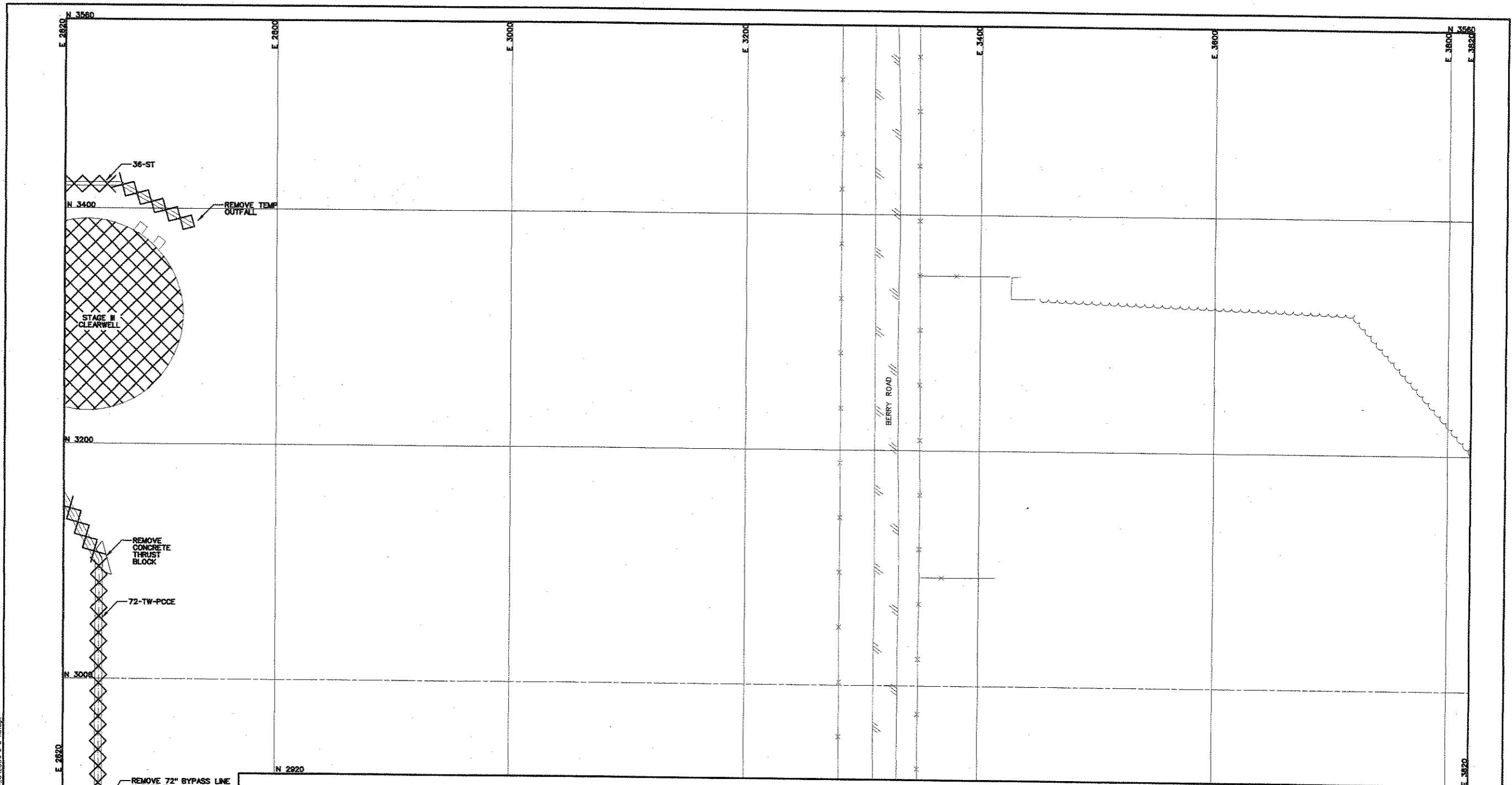
DALLAS WATER UTILITIES
 CITY OF DALLAS, TEXAS

TCB | AECOM

TCB INC.
 17800 DALLAS PARKWAY, SUITE 1010
 DALLAS, TEXAS 75248-1167
 WWW.TCB.AECOM.COM

DESIGN	RO	CONTRACT NO.	DWG. NO.
DRAWN	RE/TAS	08-155	D-C-113
CHECKED	US	FILE NO.	27 of 210
APPROVED	RO	620Q-400R.3	
DATE	APR. 2008		

J:\2002\Jep\02071A.DWG Sheet\CONTRACT_VESMC-B-C-115.dwg



KEY

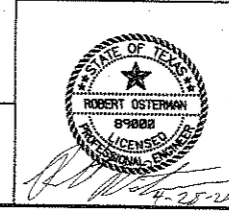
AREA 1 D-C-111	*
AREA 2 D-C-112	*
AREA 3 D-C-113	*

* NOT USED FOR THIS CONTRACT

LEGEND

	EXISTING
	PROPOSED
	FUTURE

NOTE:
1. REFER TO SHEET D-C-110 FOR GENERAL DEMOLITION NOTES.



BAR IS ONE INCH IN LENGTH ON ORIGINAL DRAWING. CHECK LENGTH AND ADJUST SCALES ACCORDINGLY.

4			
3			
2			
1			
NO.	DATE	REVISION	APPROV.

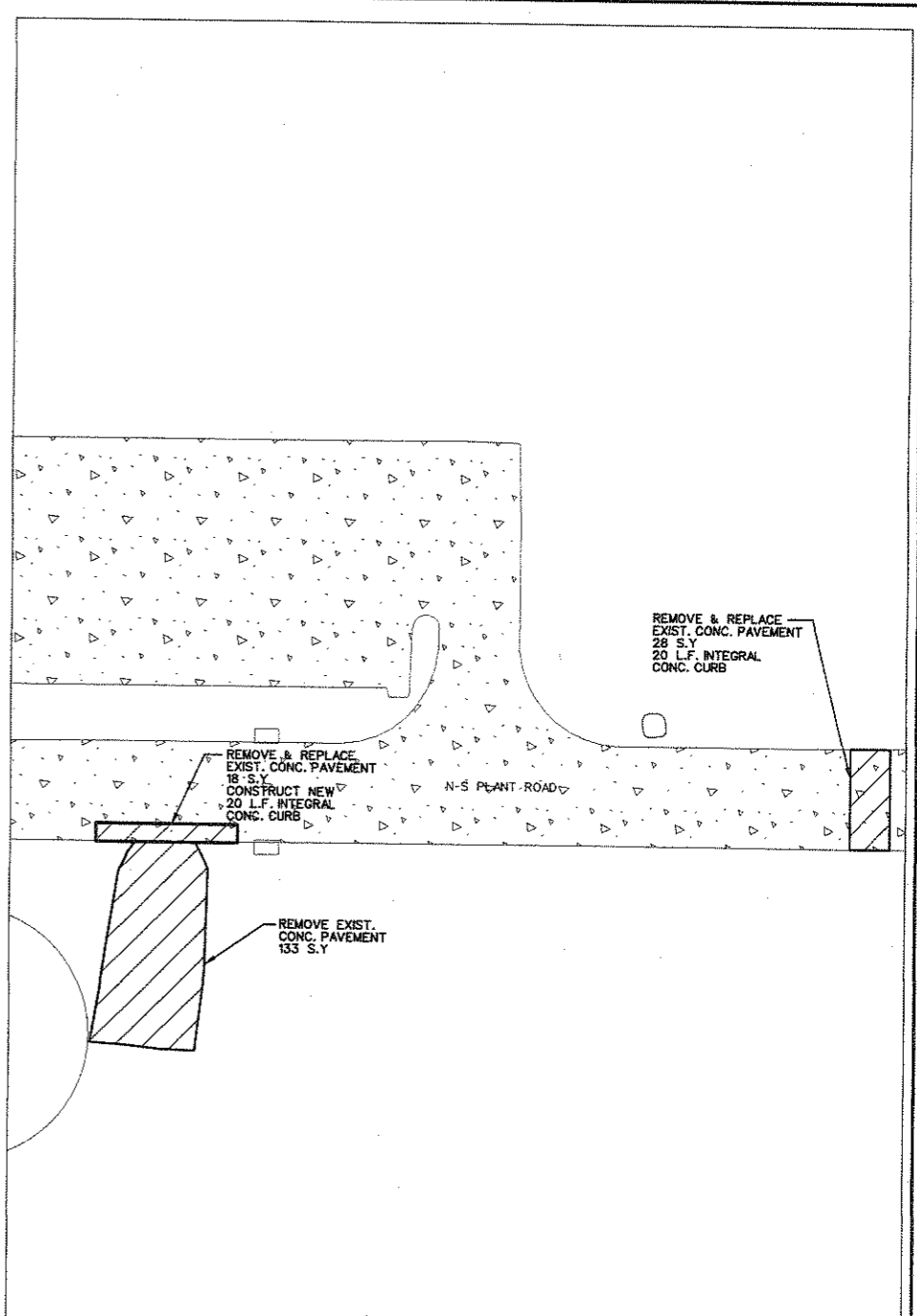
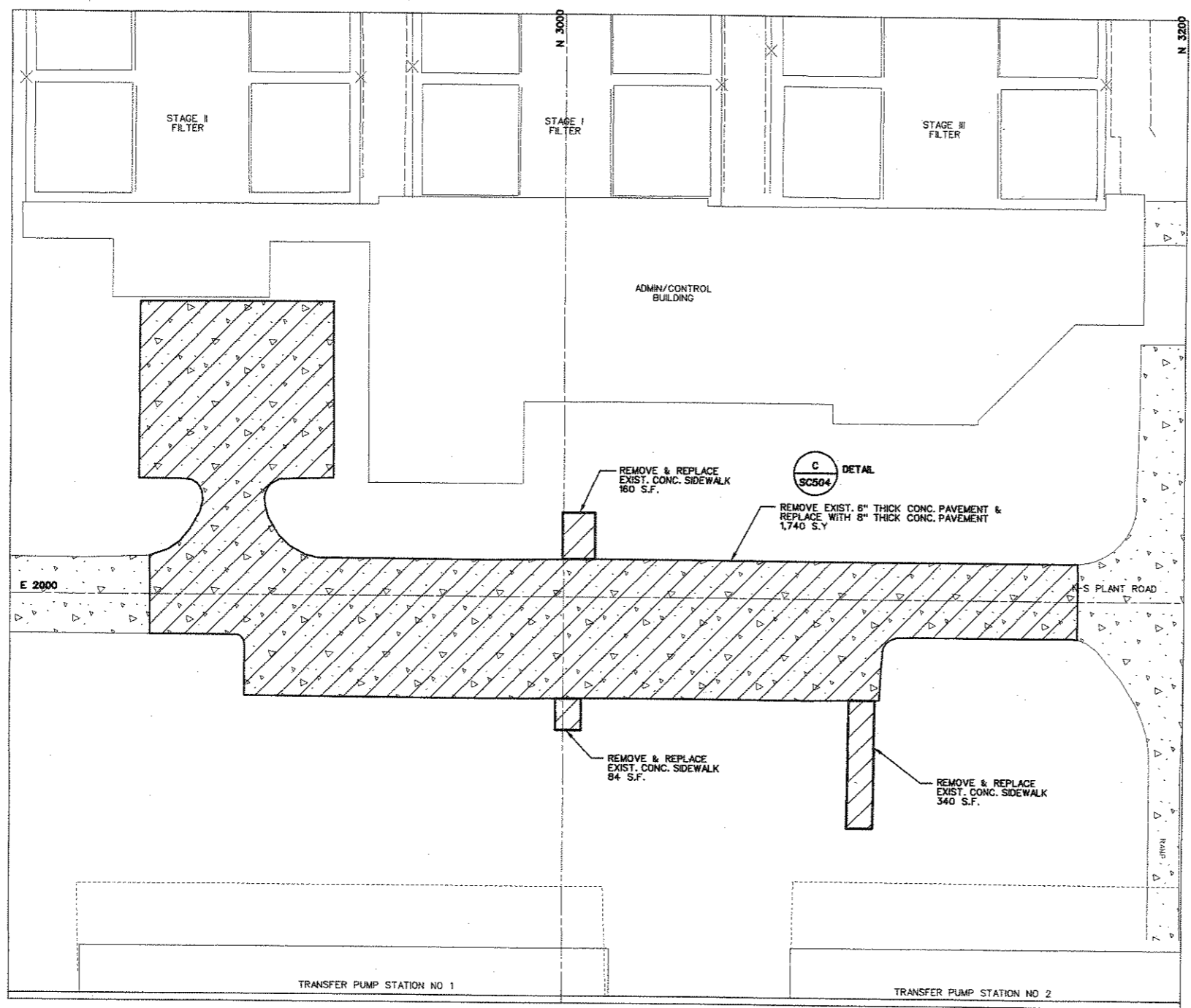
EAST SIDE WTP 540 MGD EXPANSION - PART B
BASE - NE & SE CLEARWELLS & FLUMES
ALTERNATE - NW & SW CLEARWELLS
DEMOLITION PLAN - AREA 5

DALLAS WATER UTILITIES
CITY OF DALLAS, TEXAS

TCB | AECOM

DESIGN	RO	CONTRACT NO.	DWG. NO.
DRAWN	RE/TAS	08-155	D-C-115
CHECKED	US	FILE NO.	2.8 of 2.10
APPROVED	RO	620Q-400R.3	
DATE	APR. 2008		

J:\2002\JWH\0207A\DWG\Sheet\CONTRACT_1\ESWC-D-C-116.dwg
 APR 2008 10:48 AM



- NOTES:**
- REFER TO STANDARD DETAILS SHEET S-C-511 FOR PAVEMENT JOINTS DETAIL.
 - SAWED DUMMY JOINTS AT 15' O.C.E.W. REQUIRED ON ALL NEW PAVEMENT.
 - TRANSVERSE EXPANSION JOINT SHALL BE SPACED AT 100' CENTERS.
 - FOR SIDEWALKS, REFER TO NCTCOG STD. DRAWING NO. 2170.

EXISTING TO BE DEMOLISHED

N

0 20 40

BAR IS ONE INCH IN LENGTH ON ORIGINAL DRAWING. CHECK LENGTH AND ADJUST SCALES ACCORDINGLY.

4			
3			
2			
1			
NO.	DATE	REVISION	APPROV.
EAST SIDE WTP 540 MGD EXPANSION - PART B BASE - NE & SE CLEARWELLS & FLUMES ALTERNATE - NW & SW CLEARWELLS SITE DEMOLITION PLAN DALLAS WATER UTILITIES CITY OF DALLAS, TEXAS TCB AECOM			
DESIGN <input type="checkbox"/> RO DRAWN <input type="checkbox"/> RE/TAS CHECKED <input type="checkbox"/> US APPROVED <input type="checkbox"/> RO DATE <input type="checkbox"/> APR. 2008		CONTRACT NO. 08-155	DWG. NO. D-C-116
		TCB INC. 17300 DALLAS PARKWAY, SUITE 1010 DALLAS, TEXAS 75248-1167 WWW.TCB.AECOM.COM	FILE NO. 620Q-400R.3
			29 of 210